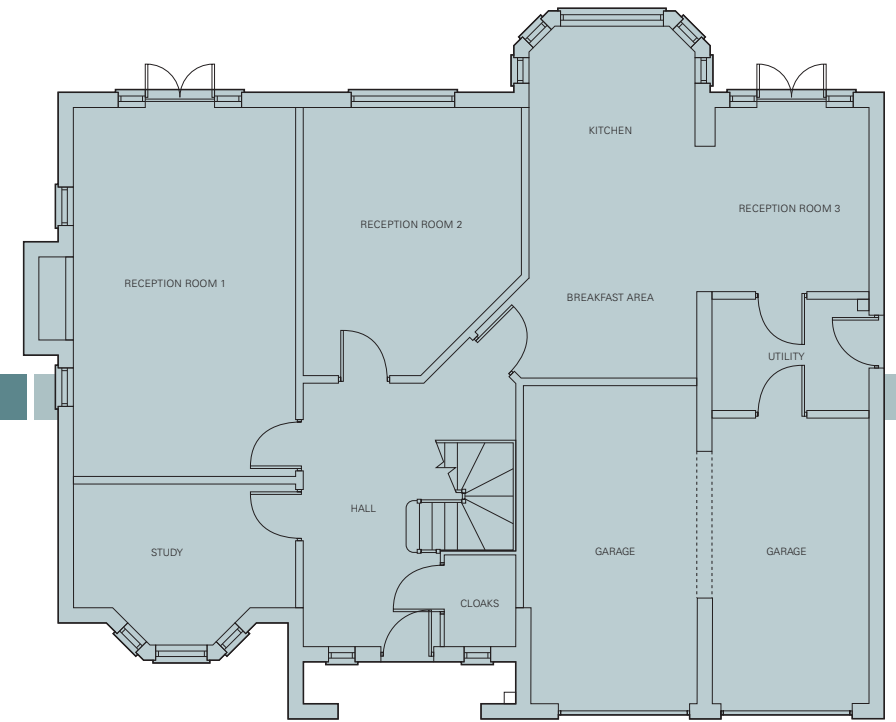




Ground Floor



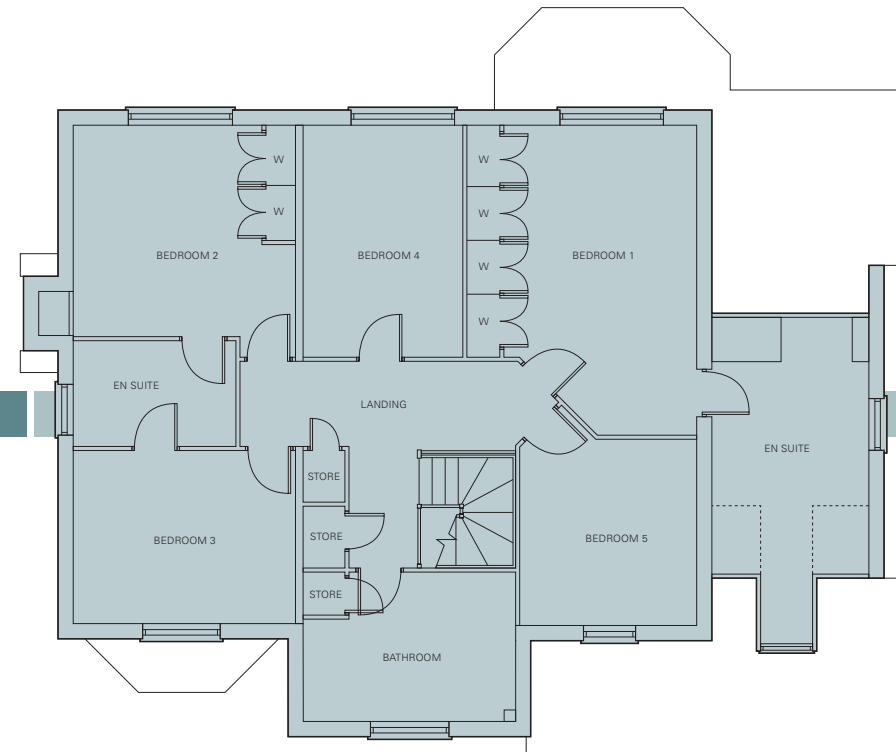
Ground Floor

Kitchen/Breakfast Area (Min.)	6.05m x 2.84m	19'10" x 9'4"
Utility	2.63m x 1.90m	8'7" x 6'2"
Reception Room 1	6.38m x 3.89m	20'11" x 12'9"
Reception Room 2 (Max.)	4.63m x 3.76m	15'2" x 12'4"
Reception Room 3 (Min.)	3.17m x 2.98m	10'5" x 9'9"
Study (Min.)	3.89m x 2.10m	12'9" x 6'10"

First Floor

Bedroom 1 (Max. Ex. Robes)	5.36m x 3.30m	17'7" x 10'11"
Bedroom 2 (Min. Inc. Robes)	3.89m x 3.66m	12'9" x 12'0"
Bedroom 3	3.89m x 3.00m	12'9" x 9'10"
Bedroom 4	4.02m x 2.73m	13'2" x 8'11"
Bedroom 5 (Min.)	3.19m x 3.07m	10'5" x 10'0"

First Floor



Computer generated image and floorplans depict a typical Christleton home. For further details of finishes, specification and parking allocation, please check with your Homes Consultant. All dimensions are approximate and should not be used when ordering carpets and soft furnishings. Environmental, elevational treatments and roof designs may vary from those shown.

For SAP rating please ask your Homes Consultant.